

**To:** Backer, Dana[dbacker@blm.gov]; Betenson, Matthew[mbetenso@blm.gov]  
**From:** Briggs, Paul  
**Sent:** 2017-06-20T17:24:42-04:00  
**Importance:** Normal  
**Subject:** Re: Resilient Landscapes Collaborative Info  
**Received:** 2017-06-20T17:25:24-04:00  
2016 Southern Utah RL Collaborative Report FINAL.docx

Working on it.

2016\_09\_08.Attachment A.WFRL FY2016 Annual Repo...

Paul N. Briggs  
Fuels Program Manager  
Color Country District  
(435) 865-3002 Office  
(435) 590-4827 Cell  
(435) 865-3058 Fax

On Tue, Jun 20, 2017 at 3:17 PM, Backer, Dana <dbacker@blm.gov> wrote:

Thank you.

I was hoping to get the report. I was hoping to get the report piece of the final report.

Dana

Dana Backer  
Science Program Administrator  
Grand Staircase Escalante National Monument  
Kanab, UT 84741  
435-644-1257

On Tue, Jun 20, 2017 at 3:05 PM, Davis, Brandon <bbdavis@blm.gov> wrote:

Attached Geodatabase

----- Forwarded message -----

**From:** Briggs, Paul <pbriggs@blm.gov>  
**Date:** Tue, Jun 20, 2017 at 1:03 PM  
**Subject:** Fwd: Resilient Landscapes Collaborative Info  
**To:** Brandon Davis <bbdavis@blm.gov>

I'll need your help with the Geodatabase portion.  
Thanks

Paul N. Briggs  
Fuels Program Manager  
Color Country District  
(435) 865-3002 Office  
(435) 590-4827 Cell  
(435) 865-3058 Fax

----- Forwarded message -----

From: **Backer, Dana** <[dbacker@blm.gov](mailto:dbacker@blm.gov)>  
Date: Tue, Jun 20, 2017 at 10:13 AM  
Subject: Re: Resilient Landscapes Collaborative Info  
To: "Briggs, Paul" <[pbriggs@blm.gov](mailto:pbriggs@blm.gov)>  
Cc: Matthew Betenson <[mbetenso@blm.gov](mailto:mbetenso@blm.gov)>

Hi Paul,  
I'm finally circling back to this and wanted to see if you could send me the final report from FY2016 that was submitted with the final report geodatabase.

Thanks.  
Dana

Dana Backer  
Science Program Administrator  
Grand Staircase Escalante National Monument  
Kanab, UT 84741  
435-644-1257

On Mon, Feb 13, 2017 at 11:43 AM, Briggs, Paul <[pbriggs@blm.gov](mailto:pbriggs@blm.gov)> wrote:

Dana,  
It was nice to talk with you.

Here is some information of what we have done the last few years.

I look forward to meeting you and working on projects/efforts in the future.

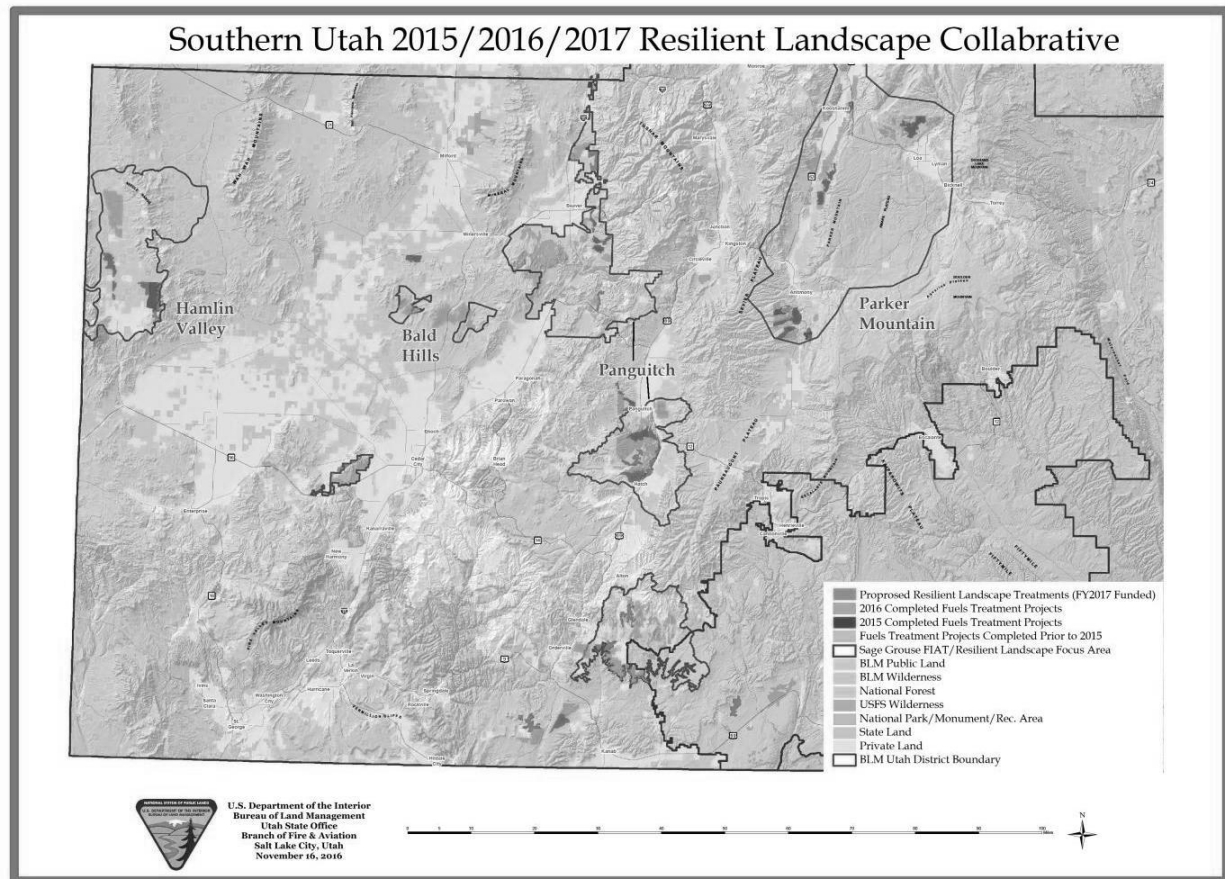
Paul N. Briggs  
Fuels Program Manager

Color Country District  
(435) 865-3002 Office  
(435) 590-4827 Cell  
(435) 865-3058 Fax

--

**Brandon Davis**  
Color Country BLM. Cedar City, UT  
Office # 435 865 3030  
Cell # 435 864 7478  
[bbdavis@blm.gov](mailto:bbdavis@blm.gov)

# FY 2016 Southern Utah Resilient Landscape Collaborative



## 1. Narrative

The goal of the Southern Utah Resilient Landscape Collaborative is to conserve, maintain, and restore sagebrush communities to be resilient towards wildland fire and invasive species at a landscape scale while connecting and expanding existing populations and habitat of Greater Sage-Grouse and sagebrush obligate species while providing for the resiliency of these species. The Southern Utah Collaborative is effectively implementing elements of the National Cohesive Wildland Fire Management Strategy and the Secretarial Order 3336 on Rangeland Fire Prevention, Management and Restoration. The Collaborative is strengthening the Wildland Fire Management program's ability to restore and maintain resilient landscapes across all jurisdictions in an "all hands/all lands" approach to resilient landscapes in an integrated, place-based approach of partnerships among programs, activities, and organizations. Collaboration between the wildland fire and resource management programs has been occurring to address broad land-health outcomes and the ecological role of fire in fire-adapted ecosystems.

Projects within the Southern Utah Resilient Landscape Collaborative receiving funding include Parker Mountain, Hamlin Valley, Yellow Jacket, Panguitch/South Canyon, Upper Kanab Creek, and North Beaver. These areas have also been identified as being important Sage-Grouse habitat as part of the Southern Great Basin Fire and Invasive Species Tool (FIAT) Assessment. These areas are continuation of existing projects (see Attached Map).

The Resilient Landscape funds are being leveraged with other funds including BLM Fuels Management, Wildlife, and Healthy Lands funds along with outside funding from the Utah Watershed Restoration Initiative for the total of \$7,525,534. This funding allowed for the implementation of 31,535 acres in treatments and over 40,000 acres in monitoring. These additional funds more than double the Resilient Landscape investment of \$3.5 million.

The following partners have contributed towards the Southern Utah Resilient Landscape Collaborative: Utah Department of Natural Resources, Utah Division of Forestry, Fire and State Lands, Utah Division of Wildlife Resources (UDWR) Habitat Council, UDWR Internal Conservation Permit-Deer and Pronghorn, Utah School and Institutional Trust Lands, Mule Deer Foundation, Rocky Mountain Elk Foundation, Sportsmen for Fish & Wildlife, Utah Bowman's Association, National Wild Turkey Federation, Pittman-Robertson Federal Aid, Safari Club International, Natural Resource Conservation Service, U.S. Fish and Wildlife Service, Brigham Young and Utah State Universities (see attached funding sources). The majority of the implementation work will be done through contracts issued by the State of Utah through the Utah Watershed Restoration Initiative.

Resilient Landscape funding received for the Utah Southern Collaborative was combined with other funds from the Utah Partnership for Conservation and Development and committed via an assistance agreement with the Utah Department of Natural Resources in July 2016. Since that time contracts have been awarded or are awaiting award to complete implementation work as well as additional cultural resource inventory to facilitate additional FY 17 treatments. This infusion of funds allowed Utah BLM to commit funding to highly ranked priority projects in the Utah Watershed Restoration Initiative (WRI). This in turn

made the other funding available to the partnership go further, resulting in an additional 21,905 additional acres of treatments totaling 53,440 acres of treatment on Bureau of Land Management administered lands in Southern Utah.

Projects that have been implemented in the Utah Southern Collaborative have been successful in maintaining and restoring healthy sagebrush communities while connecting and expanding the sage grouse populations and habitat in the southern range of Greater Sage Grouse (see attached photos). A video was created highlighting these successes and can be viewed at: <https://www.youtube.com/watch?v=1NSZNaBDlk4>

## 2. Project Area and Treatment Accomplishments

See Attachment B. Geodatabase includes all 2016 treatments within the collaborative.

## 3. FY 2016 Wildfire Table

See Attachment B. Geodatabase includes all wildfires that impacted the collaborative area.

## 4. FY 2016 Other Activities Table

Table 1: FY 2016 Other Activities				
Other Activity	Unit of Measure	Total Units Completed	Total Activity Cost, if Known (\$)	Comments
Hamlin Valley Signs	Outreach	2 signs completed for project	\$1,500	Signs were placed within project area that explains objectives of the project.
Yellow Jacket Signs	Outreach	2 signs completed for project	\$1,500	Signs were placed within project area that explains objectives of the project.
Hamlin Valley W side quarterly mtg.	Meeting	3 meetings were held with an average of 3 landowners.	\$1,000	Meetings were to address concerns and ideas from local landowners.
Yellow Jacket Interpretive sign frames	Outreach	10 metal frames for interpretive signs for the Yellow Jacket project were completed.	\$2,500	Interpretive signs will be used for education of public on resilient landscapes.
District Wide News Release	Outreach	1 District wide news release		District wide news release was used to inform public of ongoing resilient landscape projects.
Resilient Landscape Video	Outreach	1 video was completed	\$6,000	Video was made to inform both internal personnel and external partners and public on resilient landscapes. Video can be found at: <a href="https://www.youtube.com/watch?v=1NSZNaBDlk4">https://www.youtube.com/watch?v=1NSZNaBDlk4</a>
Center Creek	Outreach	Multiple		Multiple signs and press releases in local papers

Outreach				to inform public of project and objectives.
Pine Creek Outreach	Outreach	Multiple		Multiple signs and press releases in local papers to inform public of project and objectives.
Center Crk. Cultural	Acres Inventoried	851	\$29,785	Cultural clearance before mechanical implementation.
Duncan Crk. Cultural	Acres Inventoried	1,279 acres	\$54,808	Cultural clearance before mechanical implementation.
Hamlin Cultural	Acres Inventoried	9,993 acres	\$145,895	Cultural clearance before mechanical implementation.
Indian Crk. Cultural	Acres Inventoried	1,800 acres	\$46,800	Cultural clearance before mechanical implementation.
Jenny Clay Cultural	Acres Inventoried	1,500 acres	\$54,250	Cultural clearance before mechanical implementation.
S. Beaver Cultural	Acres Inventoried	950 acres	\$24,700	Cultural clearance before mechanical implementation.
S. Cyn Cultural	Acres Inventoried	1,213 acres	\$42,455	Cultural clearance before mechanical implementation.
Upper Sink Valley Cultural	Acres Inventoried	1,200 acres	\$35,000	Cultural clearance before mechanical implementation.
Cottonwood Cultural	Acres Inventoried	1,542 acres	\$53,970	Cultural clearance before mechanical implementation.
Yellowjacket Cultural	Acres Inventoried	1,770 acres	\$44,250	Cultural clearance before mechanical implementation.
Parker Mt. Sage Grouse Telemetry	Birds Collared	31 birds	\$100,000	Lek monitoring and telemetry data for the Parker Mountain Focus area of the collaborative. This will help determine the success of habitat treatments on the Parker Front, Greenwich, Narrows, Deer Creek, Center Creek and Pole Canyon treatment areas.
Center Creek Vegetation Monitoring	Acres Monitored	850	\$1,000	Before and after photo plots. Vegetation monitoring.
Pine Creek Vegetation Monitoring	Acres Monitored	400	\$1,000	Before and after photo plots. Vegetation monitoring.
Hamlin Wildlife Baseline Monitoring	Acres Monitored	10,000	\$10,000	Baseline Wildlife (raptor, migratory bird, etc surveys), general wildlife clearances.
Hamlin Vegetation Baseline Monitoring	Acres Monitored	17,000	\$17,000	Baseline nested frequency and rangeland health monitoring.
Duncan Crk. Monitoring	Acres Monitored	1,200	\$1,200	Before and after photo plots. Vegetation monitoring.
Indian Crk. Monitoring	Acres Monitored	1,800	\$1,800	Before and after photo plots. Vegetation monitoring.
Jenny Clay Monitoring	Acres Monitored	1,500	\$1,500	Before and after photo plots. Vegetation monitoring.
S. Beaver Monitoring	Acres Monitored	950	\$950	Before and after photo plots. Vegetation monitoring.
S. Cyn Monitoring	Acres Monitored	1,000	\$1,000	Before and after photo plots. Vegetation monitoring.
Upper Sink	Acres	1,200	\$1,200	Before and after photo plots. Vegetation

Valley Monitoring	Monitored			monitoring.
Cottonwood Monitoring	Acres Monitored	1,500	\$1,500	Before and after photo plots. Vegetation monitoring.
Yellowjacket Monitoring	Acres Monitored	1,500	\$1,500	Before and after photo plots. Vegetation monitoring.

## 5. FY 2016 Achievements toward Goals and Objectives

### a) Goals and Objectives List (FY 2016 - FY 2017)

No Change in Goals and Objectives. Goals and Objectives are as follows:

The overall goal of the Southern Utah Resilient Landscape Collaborative is to conserve, maintain, and restore sagebrush communities to be resilient towards wildland fire and invasive species at a landscape scale while connecting and expanding existing populations and habitat of Greater Sage-Grouse and sage brush obligate species while providing for the resiliency of these species.

#### Outcomes and Objectives

- Enhance Greater Sage-Grouse and mule deer habitat by removing encroaching pinyon and juniper to increase connectivity between isolated populations of Greater Sage-Grouse and increase sagebrush and mountain shrub cover for mule deer winter and fawning habitat.
- Enhance and expand large blocks of diverse sagebrush habitat with a variety of age classes to meet the seasonal needs for Greater Sage-Grouse, as well as other sagebrush-obligate wildlife.
- Implement cost-effective vegetation treatments to alter fire behavior and promote understory vegetation that is resilient to effects of fire and climate change as addressed in the Great Basin and Colorado Plateau Rapid Eco-Regional Assessment.
- Move priority areas toward the desired ecological condition by mechanical and seeding treatments that facilitate allowing fire to play a more natural role.
- Implement site appropriate projects to benefit Utah Prairie Dog in accordance with the Utah Prairie Dog Recovery Plan.

### b) Achievements

Treatments completed in FY16 removed encroaching pinyon and juniper trees which reduced hazardous fuels and decreased competition for water and nutrients for sagebrush and perennial understory grasses and forbs. The result is increased production of understory vegetation and a reduced number of days with fuels in the critical stage during the fire season. Healthy perennial understory vegetation provides improved resilience and resistance to the effects of fire.

As seen in past projects these completed treatments in FY16 will increase production and vigor of understory vegetation resulting in improved nesting and brood rearing habitat for GRSG and wintering mule deer as well as other sagebrush obligate species. Increased cover



and composition of perennial understory vegetation will also reduce the amount of bare ground available for establishment and recruitment of invasive annual grasses providing an increased level of resistance and resiliency to conversion to undesirable plant species. Treatments have further improved the overall watershed health and function (see attached photos and video at <https://www.youtube.com/watch?v=1NSZNaBDlk4>).

## 6. Monitoring and Adaptive Management Activities

Vegetation and wildlife surveys and monitoring have been completed on all identified treatments by BLM and Utah Division of Wildlife Resources (UDWR) personnel. Efforts include rangeland health assessments, nested frequency transects, wildlife inventories for sensitive species, migratory birds, raptors and general wildlife inventory. Habitat Assessment Framework (HAF) and the Assessment, Inventory and Monitoring (AIM) strategy will be implemented this year. Some areas had new transects and routes established for baseline data to measure the short and long term effects of the planned actions. Sage-Grouse have been captured and collared with GPS tracking devices to study the bird's reactions to treatments in cooperation with Brigham Young and Utah State Universities. Treatments in ongoing multi-year projects were monitored for initial treatment effectiveness in regard to hazardous fuel reduction and desirable changes in vegetative composition and cover (See Table 1: Other FY16 Activities).

## 7. Expenditures and Obligations

### a) WFRL Funds

Table 2: WFRL Funds Status				
Fund Source WFRL Funds	Funds Allocated to Collaborative Area (\$)	Fund Status		
		Spent	Unspent	
		Obligated and expended in FY 2016 <sup>1</sup>	Obligated but not expended in FY 2016 <sup>2</sup>	Unobligated and not expended in FY 2016 <sup>3</sup>
BIA				
BLM	\$3,479,919.57	\$3,479,919.57		20,080.43
BOR				
FWS				
NPS				

<sup>1</sup>50 CFR 80.91 defines an obligation of funds as "a legal liability to disburse funds immediately or at a later date as a result of a series of actions." Here, we would like to know how much RL funding you have obligated and already disbursed.

<sup>2</sup>50 CFR 80.91 defines an obligation of funds as "a legal liability to disburse funds immediately or at a later date as a result of a series of actions." Here, we would like to know how much RL funding you have obligated but have not yet disbursed.

<sup>3</sup>50 CFR 80.91 defines an obligation of funds as "a legal liability to disburse funds immediately or at a later date as a result of a series of actions." Here, we would like to know how much RL funding you have not yet obligated.

Resilient Landscape funding has been transferred to the Utah Department of Natural Resources via modification to the Utah Watershed Restoration Assistance Agreement. All contracts issued by the State of Utah for services related to the treatments have been advertised and are currently underway or pending award. All contracts have started implementation and will be completed this winter. Resilient Landscape funding received in FY16 is operational with less than 1% being used for labor or administration.

### b) Matching Funds

Table 3: Matching Funds		
Fund Source	Matching Funds	Total Funds in FY 2016 (\$)
BIA		
BLM*		\$1,981,600
BOR		
FWS		
NPS		
Tribe <sup>3</sup>		

\*Please see attached “Funding Partners” and “Funding Sources”

### c) Cost Sharing

Table 4: Cost Sharing Funds		
Fund Source	Tribal/DOI Fire Management Funds	Total Funds in FY 2016 (\$)
BIA		
BLM (in Kind)*		\$244,300
BOR		
FWS		
NPS		
Tribe <sup>3</sup>		

As defined in Attachment A, page 3 of the OWF Policy Memorandum 2016-012 “Fiscal Year 2017 Wildland Fire Resilient Landscapes Request for Proposals.”

<sup>2</sup>Complete a good faith funding estimate of in-kind services and labor.

<sup>3</sup>Specify Tribal name. If more than one Tribe, add additional rows as necessary.

<sup>4</sup>As defined in Attachment A, page 2 of the OWF Policy Memorandum 2016-012 “Fiscal Year 2017 Wildland Fire Resilient Landscapes Request for Proposals.”

\*In Kind funds were through BLM, BLM Fuels (Central), BLM Fuels (Color Country), BLM HLI Southern (see attached “Funding Partners” for individual projects and “Funding Sources” for overall expenditures).

### d) Contributed (Partnership) Funds

Table 5: Contributed Funds		
Contributor's Name	Contributor Category	Total Funds in FY 2016 (\$)
Watershed Initiative*	State	\$1,713,637
Watershed Initiative*	Private	\$106,078

\*State contributors of the Watershed Initiative include: Utah Division of Forestry, Fire and State Lands, UDWR Habitat Council, Utah School and Institutional Trust Lands, Pittman-Robertson Federal Aid, Natural Resource Conservation Service and Internal Conservation Permit-Pronghorn.

\*Private contributors of the Watershed Initiative include: Mule Deer Foundation, National Wild Turkey Federation, Rocky Mountain Elk Foundation, Sportsmen for Fish and Wildlife, Utah Bowman's Association and Safari Club International.

## 8. Collaboration Activities

Collaboration on projects occurs often in the Southern Utah Region of Watershed Restoration Initiative (WRI). The Southern Region WRI meets quarterly to discuss ongoing projects, project funding, contracting, project effectiveness, continuing education, and research. Annually, members of the regional team as well as personnel from land management agencies, sportsmen groups and universities tour these project areas and discuss opportunities for expansion, success, lessons learned, research and overall effectiveness of the projects.

## 9. Partnerships

Table 6: Partners Contact Information			
Partnership Name	Contact Name	Contact Email	Contact Phone
U.S. Fish and Wildlife Service	Larry Crist	<a href="mailto:Larry.Crist@fws.gov">Larry.Crist@fws.gov</a>	801 975 3330
Utah Department of Natural Resources*	Michael Styler	<a href="mailto:mikestyler@utah.gov">mikestyler@utah.gov</a>	801 538 7200
Utah School and Institutional Trust Lands Administration	Kevin Carter	<a href="mailto:kevincarter@utah.gov">kevincarter@utah.gov</a>	801 538 5100
U.S. Department of Agriculture Natural Resource Conservation Service	Dave Brown	<a href="mailto:dave.brown@ut.usda.gov">dave.brown@ut.usda.gov</a>	801 524 4566
Utah State University	Terry Messmer	<a href="mailto:terry.messmer@usu.edu">terry.messmer@usu.edu</a>	435 797 3975
Brigham Young University	Randy Larsen	<a href="mailto:randy.larsen@byu.edu">randy.larsen@byu.edu</a>	801 422 2322
Utah Division of Wildlife Resources*	Tyler Thompson	<a href="mailto:tylerthompson@utah.gov">tylerthompson@utah.gov</a>	801 538 4766
Utah Division of Forestry Fire and State Lands*	Jennifer Hansen	<a href="mailto:jenniferhansen@utah.gov">jenniferhansen@utah.gov</a>	801 230 1052
*Utah Department of Natural Resources is the Department where Utah Division of Wildlife Resources and Utah Forestry, Fire, and State Lands reside. UDWR coordinates our Utah's Partnership for Conservation and Developments Watershed Restoration Initiative with the following partners contributing funds towards the Southern Utah Resilient Landscape Collaborative Utah Division of Forestry, Fire and State Lands, UDWR, Habitat Council, Internal Conservation Permit Deer, Internal Conservation Permit Pronghorn, Utah School and Institutional Trust Lands, Mule Deer Foundation, Rocky Mountain Elk Foundation, Sportsmen for Fish & Wildlife, Utah Bowman's Association, and Safari Club International.			

## 10. Provide an updated FY 2017 request for Funding from the WFRL Fiscal Year 2016 collaborative work plan

Table 7a: Updated FY 2017 Funding Request by Activity					
Activity Priority	Activity Name	Activity Category (e.g., Administration, Community Assistance, NEPA, Planning)	Activity Type (e.g., Consultation, Contract, Implementation Action, Monitoring, Mitigation, Project, Treatment Plan, NEPA Type)	Estimated Activity Cost - Resilient Landscapes Funding	Estimated Activity Cost - Other Funding - MATCH <sup>1</sup>
	Upper Long Hollow Monitor	Administration	Monitoring	\$10,000	\$10,000
	Spanish George Monitor	Administration	Monitoring	\$15,000	\$15,000
	Indian Peak Monitor	Administration	Monitoring	\$10,000	\$10,000
	North Buckskin Monitor	Administration	Monitoring	\$1,000	\$1,000
	Deep Creek Monitor	Administration	Monitoring	\$1,000	\$1,000
	Center Creek Monitor	Administration	Monitoring	\$1,000	\$1,000
	Glendale Bench Monitor	Administration	Monitoring	\$10,000	\$10,000
	Burnt Cedar Point Monitor	Administration	Monitoring	\$10,000	\$10,000
	Sink Valley Monitor	Administration	Monitoring	\$10,000	\$10,000
	Yellowjacket (Buck Pasture) Monitor	Administration	Monitoring	\$10,000	\$10,000
	Chipman Monitor	Administration	Monitoring	\$10,000	\$10,000
	Indian Creek Monitor	Administration	Monitoring	\$10,000	\$10,000
	S Cyn (Roller Mill) Monitor	Administration	Monitoring	\$10,000	\$10,000
	Upper Long Hollow Cultural	Project Preparation	Contract	\$35,000	\$35,000
	Spanish George Cultural	Project Preparation	Contract	\$50,000	\$50,000
	Indian Peak Cultural	Project Preparation	Contract	\$35,000	\$35,000
	North Buckskin Cultural	Project Preparation	Contract	\$8,400	\$8,400
	Deep Creek Cultural	Project Preparation	Contract	\$12,000	\$12,000
	Center Creek Cultural	Project Preparation	Contract	\$5,500	\$5,500
	Glendale Bench Cultural	Project Preparation	Contract	\$35,000	\$35,000

	Burnt Cedar Cultural	Project Preparation	Contract	\$50,000	\$50,000
	Sink Valley Cultural	Project Preparation	Contract	\$50,000	\$50,000
	Yellowjacket (Buck Pasture) Cultural	Project Preparation	Contract	\$35,000	\$35,000
	Chipman Cultural	Project Preparation	Contract	\$50,000	\$50,000
	Indian Creek Cultural	Project Preparation	Contract	\$35,000	\$35,000
	S Cyn (Roller Mill) Cultural	Project Preparation	Contract	\$35,000	\$35,000
	Outreach for Upper Long Hollow, Spanish George, Indian Peak, N. Buckskin, Chipman, Indian Creek	Project Preparation	Outreach	\$1,000	\$1,000
	Outreach for Deep Creek, Center Creek	Project Preparation	Outreach	\$1,000	\$1,000
	Outreach for Glendale, Burnt Cedar, Sink Valley S. Cyn, Yellow Jacket	Project Preparation	Outreach	\$1,000	\$1,000
<b>Total</b>				<b>\$546,900</b>	<b>\$546,900</b>

<sup>1</sup>Collaboratives are required to use the geodatabase.

Please see Attachment B. Geodatabase includes all proposed FY17 treatments and funding within the collaborative. A summary is as follows:

<b>Table 7b: FY 2017 Proposed Treatments</b>				
<b>Treatment Name (NFPORS Treatment Name)</b>	<b>Treatment Type</b>	<b>WFRL Proposed Funding</b>	<b>Other Funds</b>	<b>Acres</b>
Upper Long Hollow (RL HL Bullhog (2018))	Mastication	\$703,500	\$210,000	2,010
Hamlin Valley (RL HL Spanish George Chaining (2018))	Chaining	\$172,500		5,717
Hamlin Valley (RL FIAT HL Indian Peak PJ Removal)	Mastication	\$875,000	\$400,000	2,498
South Beaver (North Buckskin Harrow)	Harrow	\$100,000	\$50,000	475
Parker Mountain (RL HL Deep Creek Chaining)	Mastication	\$240,000	\$118,000	681
Parker Mountain (RL HL Center Creek Unit 1 Bullhog)	Mastication	\$120,000	\$32,000	316
Upper Kanab Creek (RL Glendale Bench Proposed Treatment)	Mastication	\$800,000	\$500,000	2,299
Upper Kanab Creek (RL Burnt Cedar Point Bullhog/Chaining)	Mastication & Chaining	\$1,100,000	\$500,000	5,520

Upper Kanab Creek (RL Sink Valley Proposed Chaining)	Chaining	\$460,000	\$300,000	3,155
Yellow Jacket (RL Yellowjacket PJ Removal)	Mastication	\$400,000	\$350,000	2,728
Chipman (RL HL Chipman Bullhog)	Mastication & Chaining	\$800,000	\$450,000	5,965
North Beaver (RL Indian Creek Pine Creek Treatment Area)	Mastication & Chaining	\$430,000	\$250,000	2,105
Panguitch South Canyon (RL South Canyon Roller Mill)	Mastication	\$875,000	\$250,000	2,511
Yellow Jacket (RL HL Aerial Seeding)	Seeding	\$300,000		2,728
Upper Long Hollow (RL HL Seeding 2018)	Seeding	\$50,000		2,010
<b>Total</b>		<b>\$7,426,000</b>	<b>\$3,410,000</b>	<b>40,719</b>

**11. Provide additional information important to the collaborative (including lessons learned).**

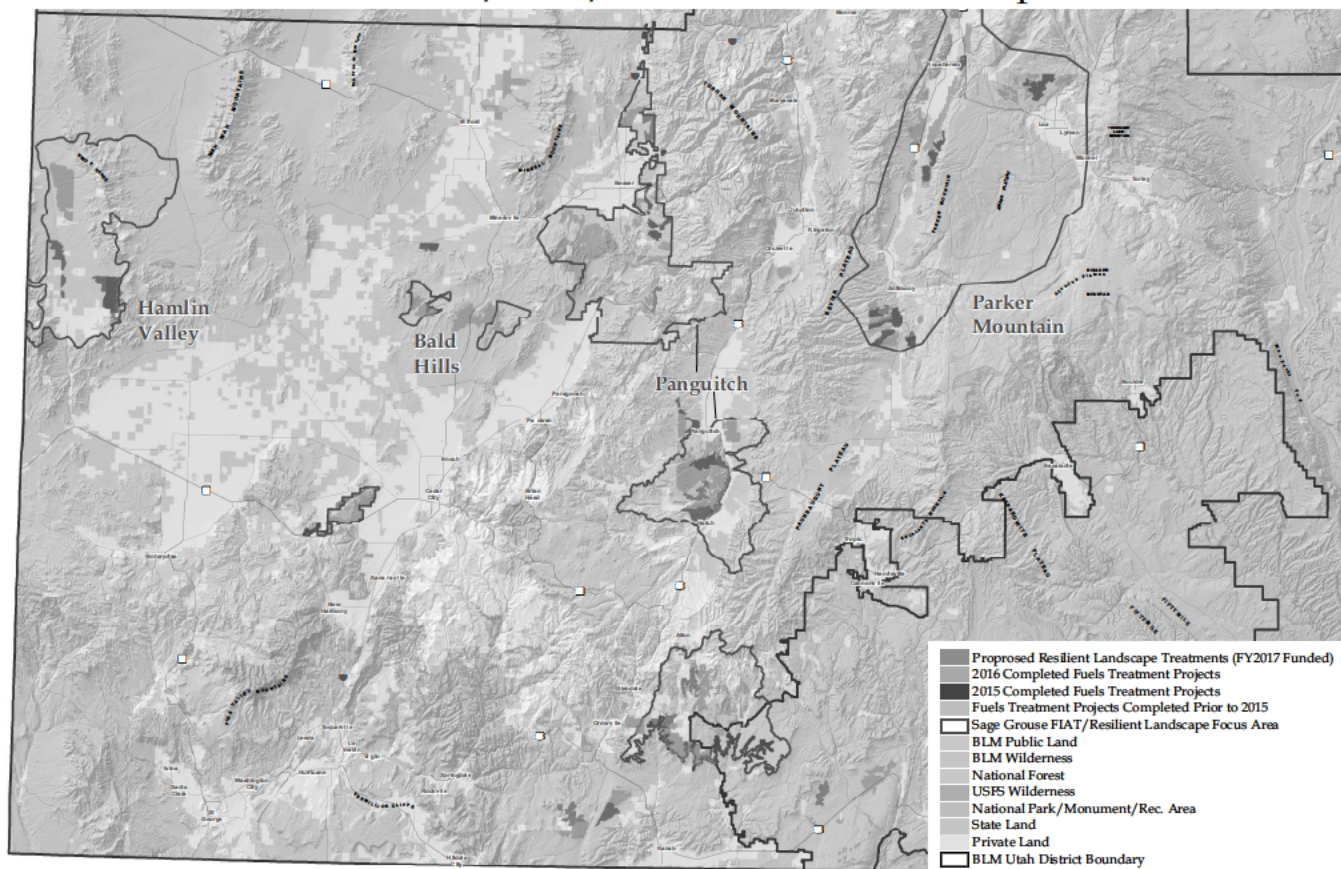
Please see attached individual project funding sheets, treatment before and after pictures and our Resilient Landscape Video highlighting these projects found at:

<https://www.youtube.com/watch?v=1NSZNaBDlk4>

Color Country and our partners in the cooperative, once again, thank you for the support and interest in our “all hands/all lands” approach to landscape scale restoration work throughout southern Utah. Continued and new research with the GPS collared sage grouse is continuing to show immediate movement into areas receiving Resilient Landscape funding. Monitoring through vegetation studies as well as photo plots has shown success in reaching our goals and objectives. As always, if budget processes allow, it would help BLM and our partners to know the availability of future funding as early as possible in the fiscal year to be able to make firm commitments to our partners regarding project funding and prioritization.



## Southern Utah 2015/2016/2017 Resilient Landscape Collaborative



U.S. Department of the Interior  
Bureau of Land Management  
Utah State Office  
Branch of Fire & Aviation  
Salt Lake City, Utah  
November 16, 2016

